



MONTHLY MEMBERSHIP PROGRESS REPORT

District 325B2

Results as of: 5/31/2015

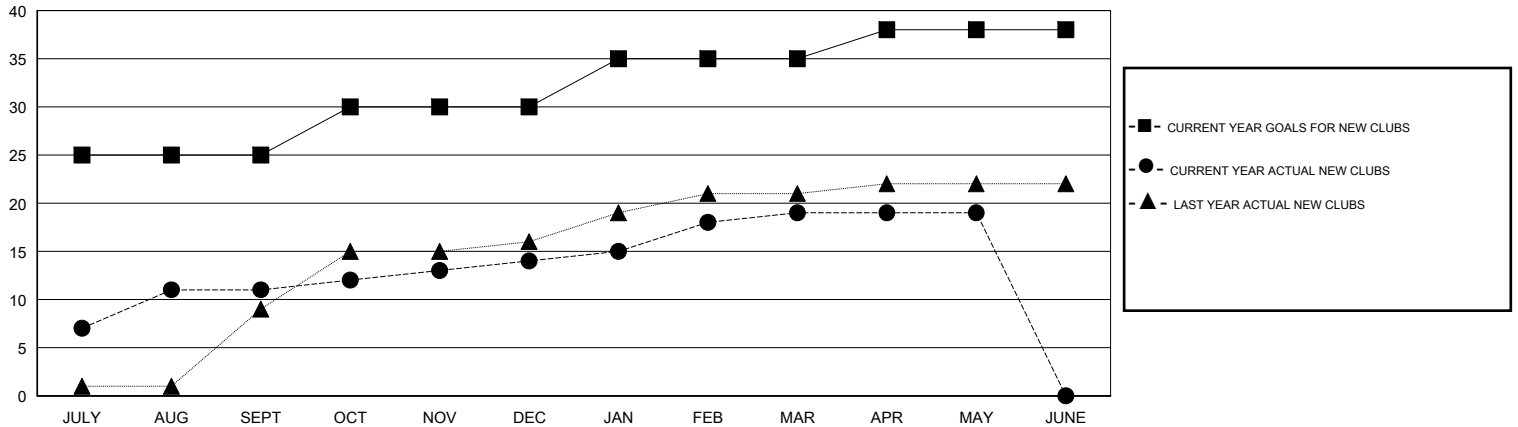
GMT: NAZMUL HAQUE

LOCATION NEPAL

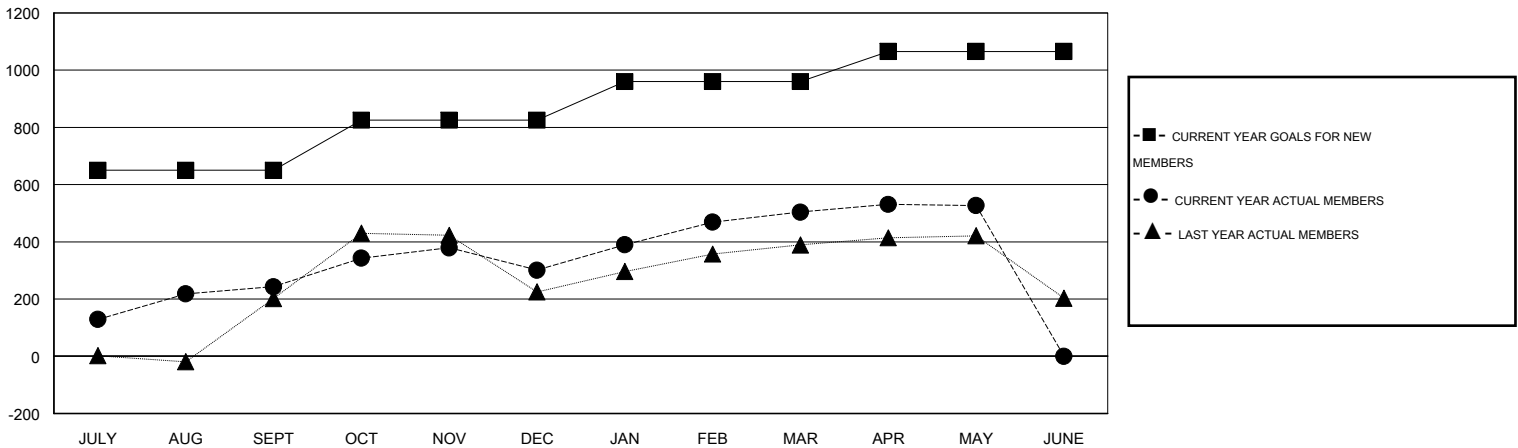
GMT CA 6

Clubs					Members				
RESULTS FOR 2014-2015					RESULTS FOR 2014-2015				
QUARTER	NEW CLUB GOAL	NEW CLUBS	DROPPED CLUBS	NET GAIN/LOSS	QUARTER	NEW MEMBER GOAL	CHARTER AND NEW MEMBERS ADDED	DROPPED MEMBERS	NET GAIN/LOSS
JULY/AUG/SEPT	25	11	1	10	JULY/AUG/SEPT	650	374	131	243
OCT/NOV/DEC	5	3	3	0	OCT/NOV/DEC	175	248	190	58
JAN/FEB/MAR	5	5	0	5	JAN/FEB/MAR	135	270	67	203
APR/MAY/JUNE	3	0	0	0	APR/MAY/JUNE	105	105	82	23

GOALS AND ACTUAL NEW CLUBS CUMULATIVE



GOALS AND ACTUAL MEMBERS CUMULATIVE



DROPPED CLUBS: 4	128 CLUBS OF 210 ADDED 1 OR MORE NEW MEMBERS	GENDER DISTRIBUTION
		MALE 4,086 (80.93%)
		FEMALE 963 (19.07%)
DROPPED MEMBERS	CLICK HERE FOR HEALTH ASSESSMENT DATA	FAMILY UNIT MEMBERS 1,986
DECEASED 5		HEAD OF HOUSEHOLD 760
CLUB CANCELLED 69		NON-HEAD OF HOUSEHOLD 1,226
OTHER 396		
TOTAL 470		